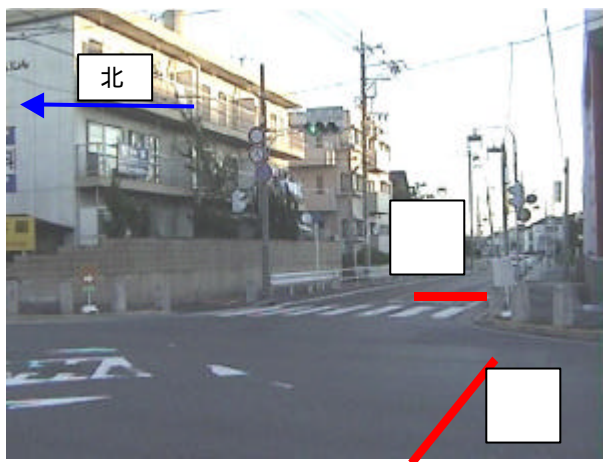
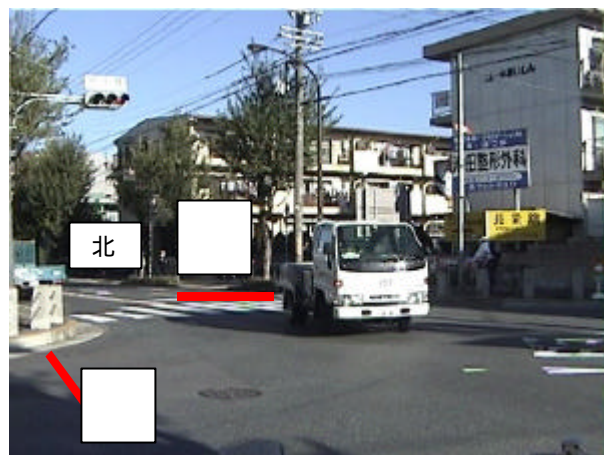


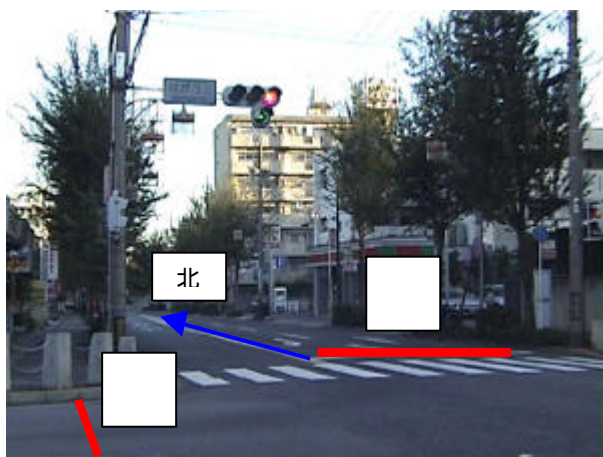
社が丘 (北行・西行)



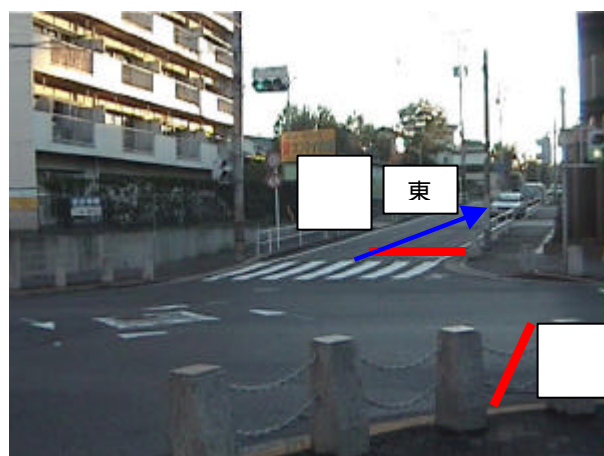
社が丘 (南行・東行)



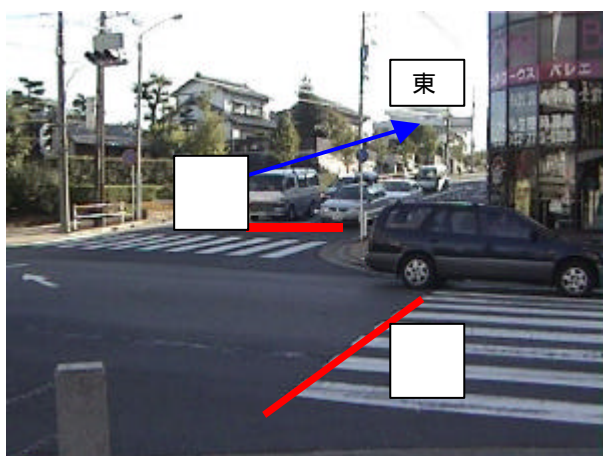
社が丘3 (東行・南行)



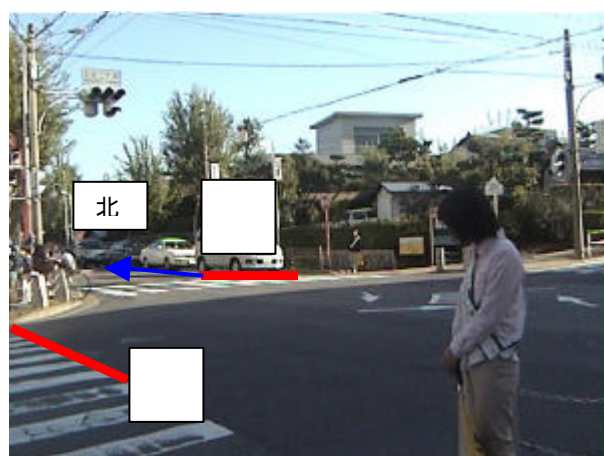
社が丘3 (北行・西行)



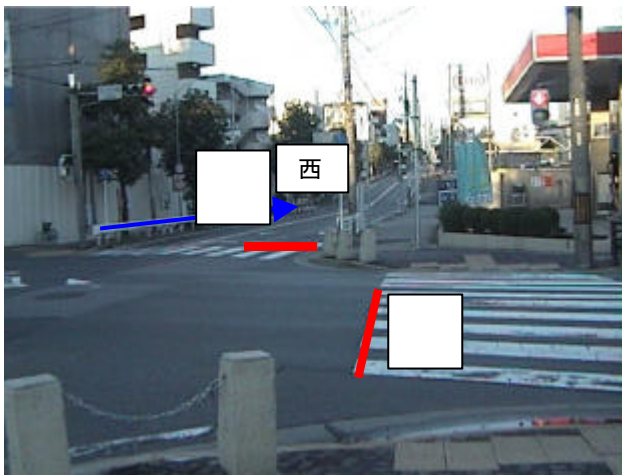
上社2 (北行・西行)



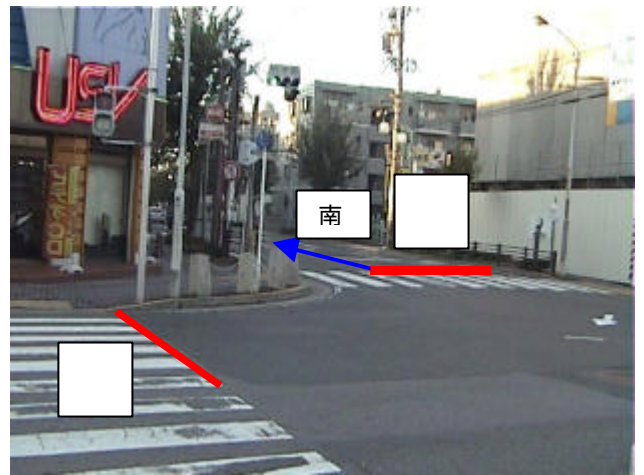
上社2 (南行・東行)



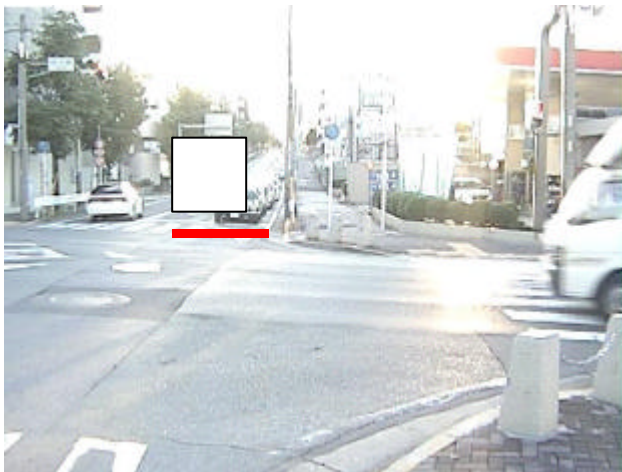
石が根（南行・東行）



石が根（北行・西行）



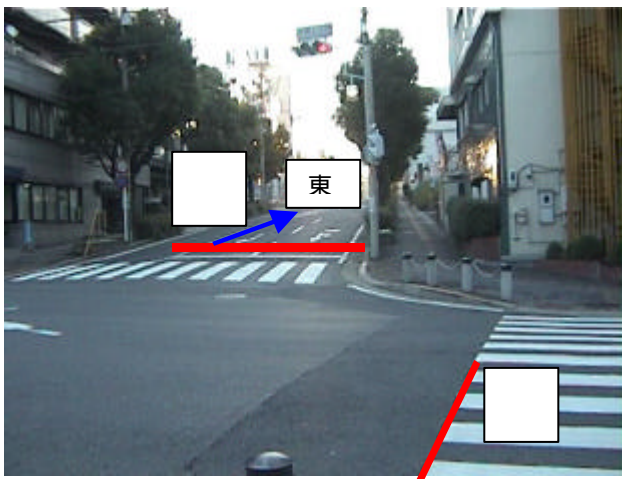
石が根右（西）



石が根左（南）



本郷 2（北行・西行）



本郷 2（南行・東行）

